

# The Perfect Handhold Tester

## OTDR AV6416



### Description

AV6416 palm OTDR is the newest instrument designed for testing FTTx network. It's mainly used to measure the physical characteristics of optical fiber under test, such as the length, the transmission loss and the splice loss etc.. It can also locate the faults or breaks of optical fiber. It's widely applied in the manufacture, construction and maintenance in optical fiber communication system.

AV6416 palm OTDR has the most advanced technology of double-color & material integrative mould, which is novel and beautiful in appearance. AV6416 offers three wavelengths and VLF in one handheld unit, especially for testing passive optical network (PON) in FTTx.

### Mainly Features:

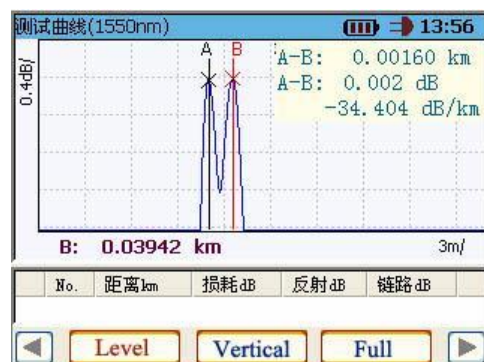
- ◆ handheld lightweight
- ◆ The most advanced technology of double-color & material integrative mould in trade
- ◆ Advanced anti-reflective TFT LCD, visible clearly in field
- ◆ 1.6m extra-short event dead zone
- ◆ 0.25m high resolution, 65535 sampling points
- ◆ Fast auto measurement, one-button operating
- ◆ Double USB interfaces, supporting USB stick and direct cable download to PC
- ◆ Supporting Bellcore GR196 file format in writing or reading
- ◆ Low battery indicator function
- ◆ WinCE operation system, double operating interface of Chinese and English
- ◆ Built-in lithium battery with high capacity for over 10 hours of operating life
- ◆ Visible fault locating (VFL)
- ◆ Universal FC/PC, FC/SC, FC/ST connector type

### ◆ Extra-short Event Dead Zone

AV6416 palm OTDR has extra-short event dead zone, which is suitable for testing short optical fiber and pigtail optical fiber.

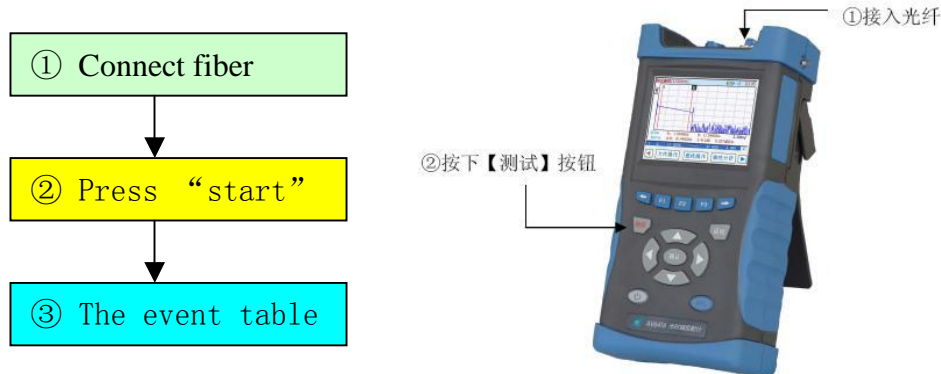
### ◆ High-Speed Auto Measurement

The function of auto measurement of AV6416 palm OTDR makes it unnecessary to operator to know about the further details of operating. Simply connect the fiber, press [Start], then the result is displayed in a few seconds, you can view the trace and event table.



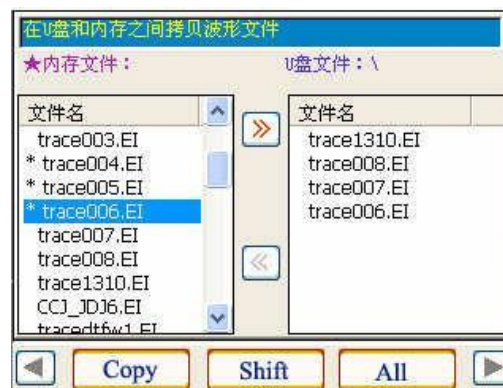
### ◆ High-Speed Auto Analyzation

AV6416 can search and locate the events and faults in trace rapidly and precisely, and then lists all events in even table, so it's very useful to maintainers to improving efficiency and it's unnecessary to know about the relative background knowledge.



### ◆ Strong File Management

AV6416 offers powerful function of file management. Besides saving, browsing or deleting files to or from USB stick and built-in memory, it can be connected to laser or inkjet printer based on PCL language, and the testing report can be printed rapidly and easily. In addition, AV6416 can communicate with PC using ActiveSync via USB cable, through which the files can be translated rapidly.



### ◆ Convenient VFL

The built-in 650nm visual fault location is ideal for easily identifying bad splice, bad connector, break or macro bend.



## Specifications

Model	3528	5626	3428
Central wavelength	1310/1550nm±20nm	1550/1625nm±20nm	1310/1550/1490nm±20nm
Fiber mode	Single mode fiber	Single mode fiber	Single mode fiber
Dynamic Range <sup>1</sup>	28/26dB	26/24dB	28/26/24dB
Distance precision	± (1m+sampling space+0.003%×distance) (IOR difference not included)		
Event deadzone <sup>2</sup>	1.6m		
Distance resolution	0.25、0.5、1、2、4、8、16m		
Distance range	4、8、16、32、64、128、256km (single mode) ;		
Pulse	10、30、80、160、320、640、1280、5120、10240ns		
Loss threshold	0.01dB		
Sampling point	65534		
Linearity	0.05dB/dB		
Internal memory	≥800		
IOR range	1.00000~2.00000		
Display	320×240、3.5 inch color touch screen.		
Interfaces	USB、Min-USB		
Fiber connector	FC/UPC (or SC)(universal connector optional)		
Power supply	AC/DC adaptor:100V~240V (1.5A) , 50/60Hz DC: 15V~20V (2A) Internal rechargeable battery: 10 hours		
Language	English		
Temperature	work: -5℃~40℃; storage: -40℃~70℃		
Related humidity	5%—95%, non-condensing		
Size	210 mm×100mm×60mm		
Weight	980g		

Comments:

1. 23℃±2℃, max pulse width, SNR=1.
2. deadzone mode(distance range 4Km, pulse width 10ns, attenuation 10dB), return loss ≥ 40dB, typical value

#### ◆ Ordering Information

**Main Frame:** AV6416 Palm OTDR

#### **Standard Accessories:**

NO.	Name	quantity
1	Mains Power Cord	1
2	AC/DC adapter	1
3	Quality certification	1
4	User manual	1
5	Trace analyzing software (CD)	1
6	Hard Carrying case	1

**Standard Module:** The available modules of AV6416 palm OTDR are shown as following:

Ordering number	Operating wavelength	Optical fiber type	Dynamic range
AV6416-5626	(1550nm/1625nm) $\pm$ 20nm	SMF	26/26dB
AV6416-3528	(1310nm/1550nm) $\pm$ 20nm	SMF	28/26dB
AV6416-3428	(1310nm/1550nm/1490nm) $\pm$ 20nm	SMF	28/26/24dB

#### **Options**

No.	Name	Type	Note
1	USB cable		Communicating with PC
2	Soft carrying case with nylon material		Carrying case
3	Standby battery pack	Special battery pack for AV6416 palm OTDR	Standby battery
4	FC/SC, FC/ST connectors		

Note For the necessity of improvement, the material contained in this document is subject to change without notice

